

4 COMMON TYPES OF NEUROPATHY



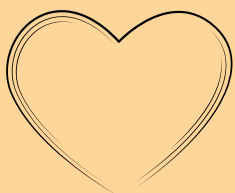
Peripheral Neuropathy

Peripheral neuropathy occurs when nerves associated with the peripheral nervous system are affected. These nerves are located outside of the brain and spinal cord. With peripheral neuropathy, the condition often manifests as numbness, weakness, and pain in the extremities, especially the hands and feet.



Cranial Neuropathy

Cranial neuropathy occurs when there is damage sustained to any of the body's 12 cranial nerves. There are two subsets of this kind which include optic neuropathy and auditory neuropathy. With this type of neuropathy, the nerve responsible for carrying signals from the inner ear to the brain is damaged.



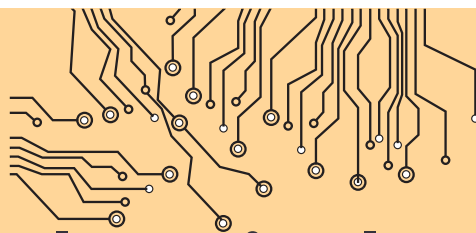
Autonomic Neuropathy

Autonomic neuropathy occurs when there is damage to the nerves of the involuntary nervous system. These are the nerves responsible for controlling the heart and circulatory system. This type of neuropathy may manifest as increased blood pressure, nausea, vomiting, bowel or bladder control issues, sexual response dysfunctions, or increased sweating.



Focal Neuropathy

Focal neuropathy is a type of neuropathy that occurs when only one specific nerve, group of nerves or area of the body is solely affected.



Pulsed Electrical Magnetic Frequency

A new breakthrough in medical technology called Pulsed Electrical Magnetic Frequency, P.E.M.F., is having a profound effect on patients. A pulsed magnetic current penetrates the surface of the skin and goes deep, right to the damaged tissue. The tissue responds to the gentle waves as each cell is immediately oxygenated which increases cellular function and stability.

For More Information On Neuropathy, Visit Our Site.

activehealthcomplete.com